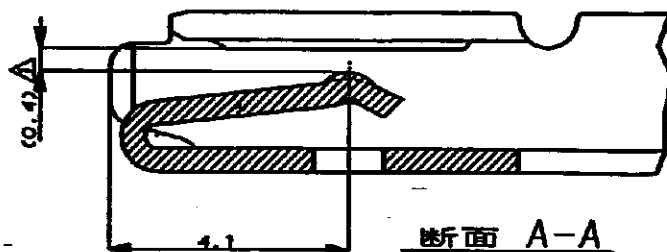
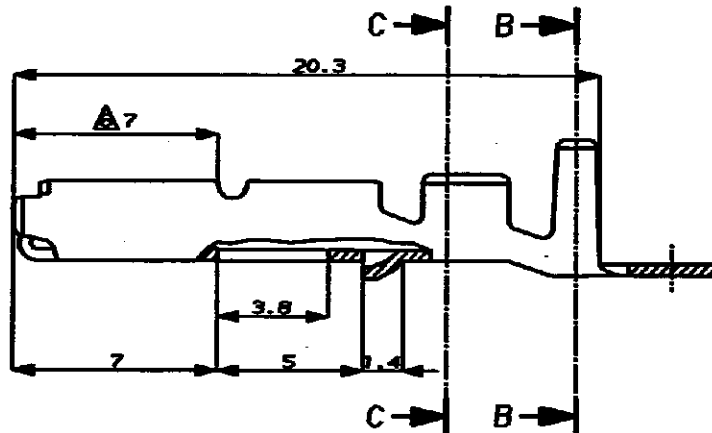
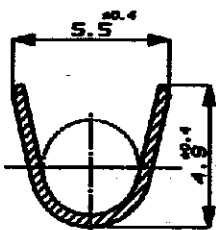
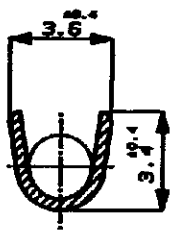
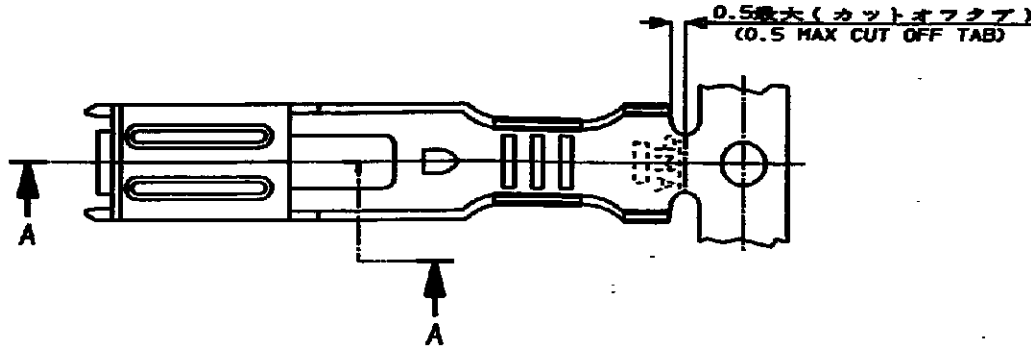
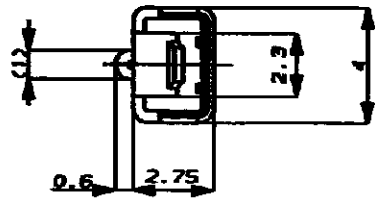


NUMBER C-172773



METRIC

DIMENSIONS IN MILLIMETERS. DO NOT SCALE PRINT



断面 A-A
SCALE: 10-1
(SECT. A-A)

- 注:
- 0.65tタブと嵌合。
 - 嵌合相手タブ型番 172777, 172778
 - 製品規格 No. 108-5165, 5166.
 - 取付適用規格 No. 114-5071.
 - 相手ハウジング型番 172500 他。
- △ 逆巻きリール。

- NOTES:
- MATE WITH 0.65t TAB.
 - MATE TAB P/N 172777, 172778.
 - PRODUCT SPEC. No. 108-5165, 5166.
 - APPLICATION SPEC. No. 114-5071.
 - PLUG HSG P/N 172500 ETC.
- △ REVERSE REEL

172774-5	鍍メツキ済 (PRE-TIN)	KLF-5	△ 1-172773-5	7
172774-1	鍍メツキ済 (PRE-TIN)	黄銅 (BRASS)	△ 1-172773-1	6
172774-6	選択金メッキ (SELECTIVE GOLD) △	黄銅 (PHOS BRO)	172773-6	5
172774-5	鍍メツキ済 (PRE-TIN)	KLF-5	172773-5	4
172774-4	鍍メツキ済 (PRE-TIN)	黄銅 (PHOS BRO)	172773-4	3
172774-2	選択金メッキ (SELECTIVE GOLD) △	黄銅 (BRASS)	172773-2	2
172774-1	鍍メツキ済 (PRE-TIN)	黄銅 (BRASS)	172773-1	1
パラ状端子型番 (LP NO.)	仕上 (FINISH)	材料 (MATERIAL)	型番 (P/N)	項番 (ID)

Copyright ©1982 AMP (Japan), LTD. ALL RIGHTS RESERVED.

AMP AMP (JAPAN), LTD. Tokyo, Japan

WIRE RANGE 0.5~2.27mm ² (AWG#20-#14)	INSULATION DIA 2.1~3.4 mm	NAME リセブクル コンタクト マルチインテグレーションコネクタ (MIC) マーク II RECEPTACLE MIC MK II
MATERIAL 表参照 SEE TABLE	FINISH 表参照 SEE TABLE	GENERAL TOLERANCE 0-10 : ±0.2 10-30 : ±0.25 30-100 : ±0.3 ANGLES : ±3°
G L/P NO -508504E J-1804	F REDRAWN W/CHANGE J-10628	LOC NUMBER B J C-172773
LTR REVISION RECORD	DR CHK DATE	SCALE 5-1 REV. 6 SHEET 1 OF 1

CUSTOMER DRAWING