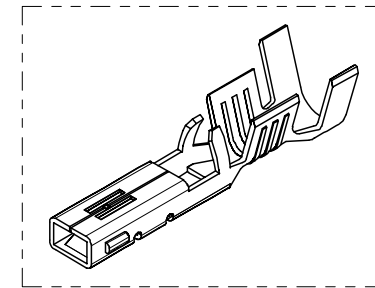
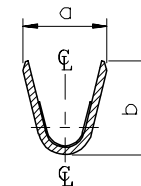
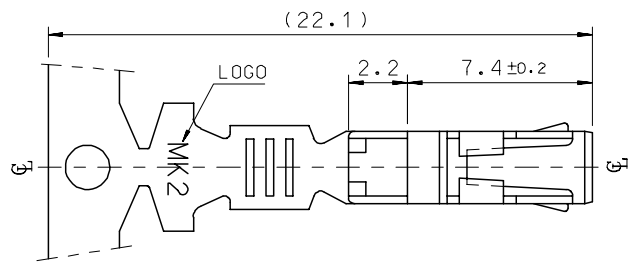
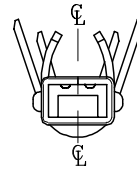
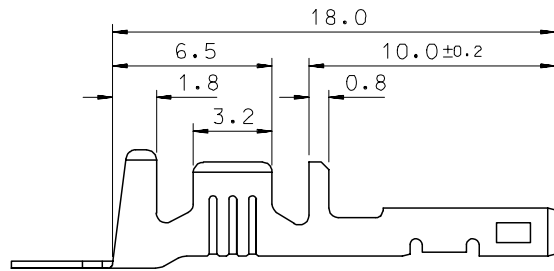


SEC' : B-B''

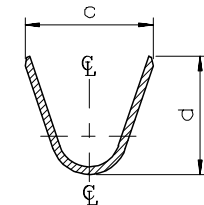
- NOTES
- MATERIAL : PHOSPHOR BRONZE
0.3mm THICKNESS
 - FINISH : PRE-PLATED TIN
 - RECOMMENDED LENGTH OF WIRE STRIP IS 4.0-4.8mm.



ISOMETRIC VIEW



SEC' : C-C''



SEC' : D-D''

MATERIAL NO	ENG. No.	AWG	a	b	c	d	PITCH P
357460210	35746-0210	#18-#14	3.4	3.8	5.2	4.8	12.0
357460110	35746-0110	#22-#20	2.85	2.8	4.2	4.0	10.6
357460410	35746-0410	#24	2.2	1.75	3.85	3.5	10.6

REVISED	DESCRIPTION
EC NO: KOR2008-0087	
DRWN: JHPARK01 2007/11/15	
CHKD: WY. YANG 2007/11/15	
APPR: YUNSIKKIM 2007/11/15	

QUALITY SYMBOLS	DESCRIPTION
▽=0	
▽=0	

GENERAL TOLERANCES (UNLESS SPECIFIED)	DIMENSION STYLE MM ONLY	
	mm	INCH
4 PLACES	± ---	± ---
3 PLACES	± ---	± ---
2 PLACES	± 0.3	± ---
1 PLACE	± 0.3	± ---
ANGULAR ± 1 °		
DRAFT WHERE APPLICABLE MUST REMAIN WITHIN DIMENSIONS		

DRAWN BY	DATE	TITLE
BK.CH01	1992/11/17	.070 FEMALE TERMINAL (A-TYPE)
CHECKED BY	DATE	
BK.CH01	1992/11/17	
APPROVED BY	DATE	
CW.LEE	1992/11/17	
MATERIAL NO.		DOCUMENT NO.
SEE TABLE		SD-35746-001
SIZE	THIS DRAWING CONTAINS INFORMATION THAT IS PROPRIETARY TO MOLEX INCORPORATED AND SHOULD NOT BE USED WITHOUT WRITTEN PERMISSION	
A3		

SCALE	DESIGN UNITS	THIRD ANGLE PROJECTION
4:1	METRIC	
MOLEX INCORPORATED		
DOCUMENT NO.		SHEET NO.
SD-35746-001		1 OF 01